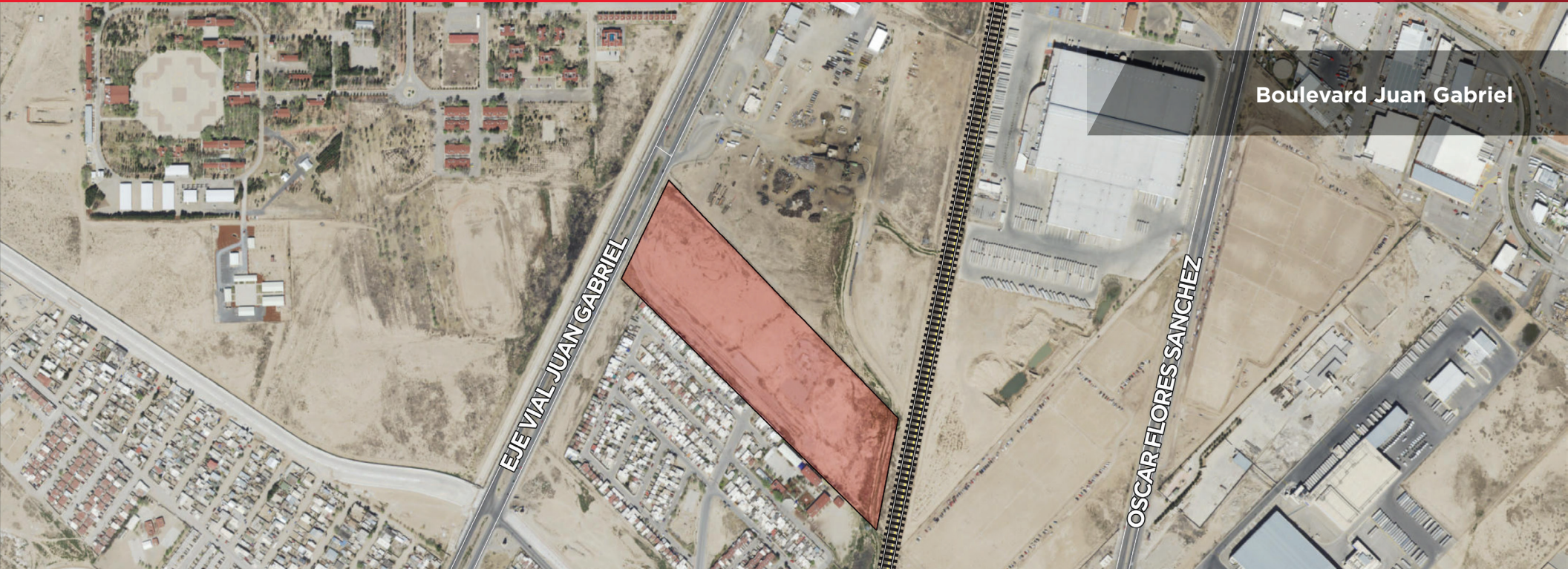




LAND FOR SALE

# CORMEX INDUSTRIAL LAND

CD. Juárez, Chihuahua, México



Boulevard Juan Gabriel

EJE VIAL JUAN GABRIEL

OSCAR FLORES SANCHEZ

## Property Highlights

- Lot size: 16.89 AC (736,160 SF)
- Rail served industrial land
- Multi-facility potential
- Conducive to different uses including manufacturing
- Fully leveled lansite
- Utilities at property line
- Approximately 30 minutes driving distance to Santa Teresa or Zaragoza Bridge
- Located at southwest area contiguous labor pool
- Nearby Panamericana Highway access
- Longitude: 31°38'2.04"N
- Latitude: 106°27'21.23"W

### Marush Sepulveda

Broker

+52 (656) 648 6842 ext. 43

msepulveda@piresintl.com

5-B Butterfield Trail Boulevard

El Paso, Texas 79906-4920

Main (915) 843 8888

[www.piresintl.com](http://www.piresintl.com)

*Independently Owned and Operated / A Member of the Cushman & Wakefield Alliance*

Cushman & Wakefield Copyright 2015. No warranty or representation, express or implied, is made to the accuracy or completeness of the information contained herein, and same is submitted subject to errors, omissions, change of price, rental or other conditions, withdrawal without notice, and to any special listing conditions imposed by the property owner(s). As applicable, we make no representation as to the condition of the property (or properties) in question.

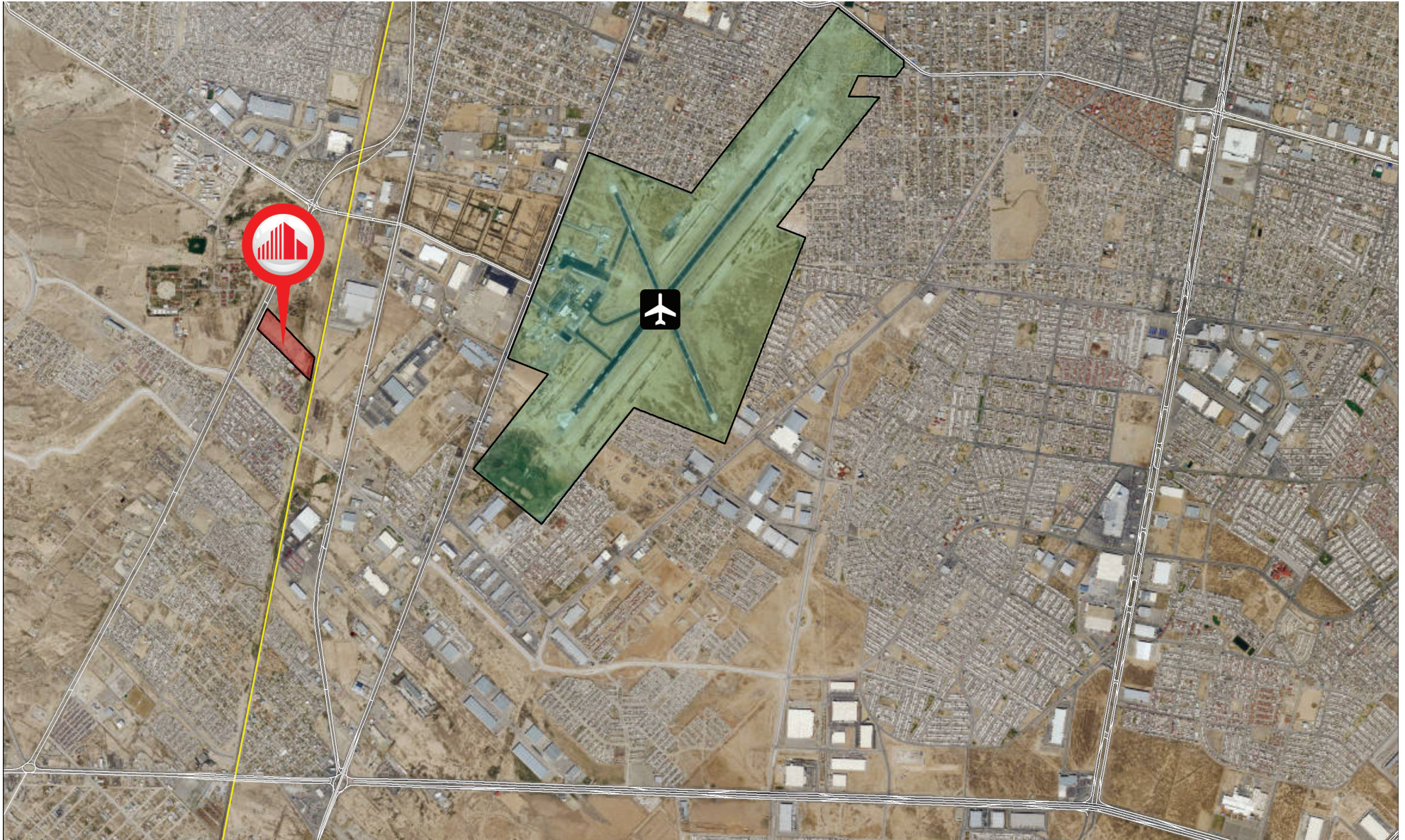


LAND FOR SALE

# CORMEX INDUSTRIAL LAND

CD. Juárez, Chihuahua, México

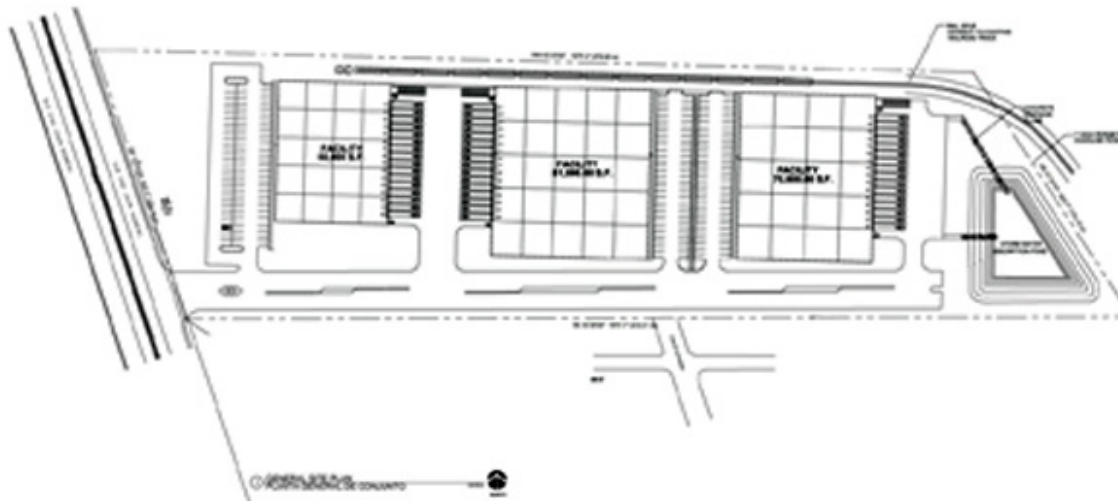
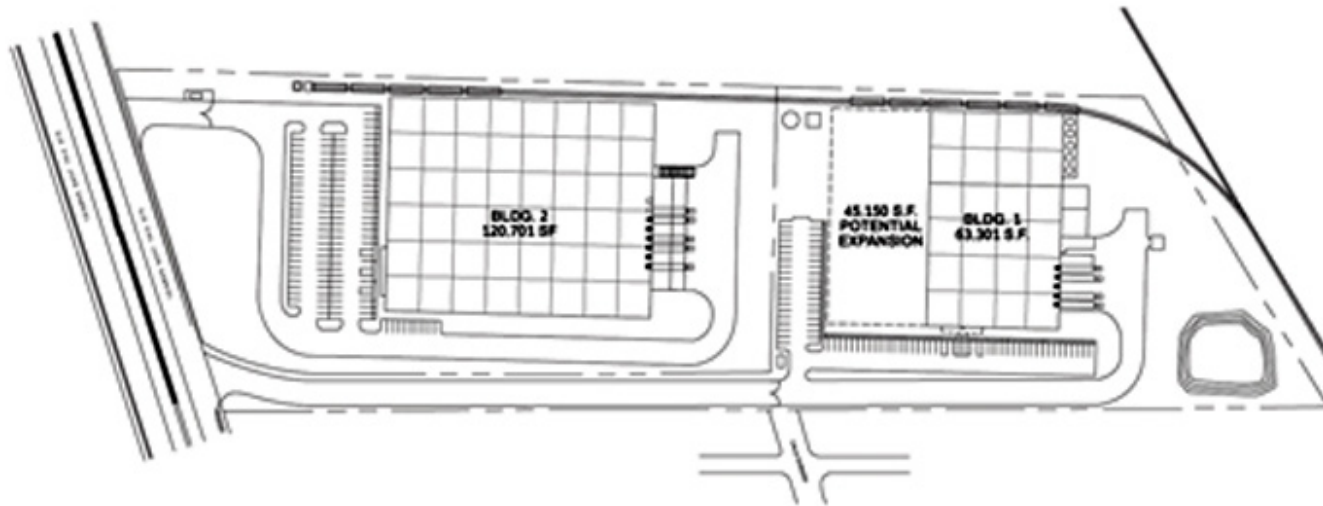
Aerial



*Independently Owned and Operated / A Member of the Cushman & Wakefield Alliance*

Cushman & Wakefield Copyright 2015. No warranty or representation, express or implied, is made to the accuracy or completeness of the information contained herein, and same is submitted subject to errors, omissions, change of price, rental or other conditions, withdrawal without notice, and to any special listing conditions imposed by the property owner(s). As applicable, we make no representation as to the condition of the property (or properties) in question.

Survey

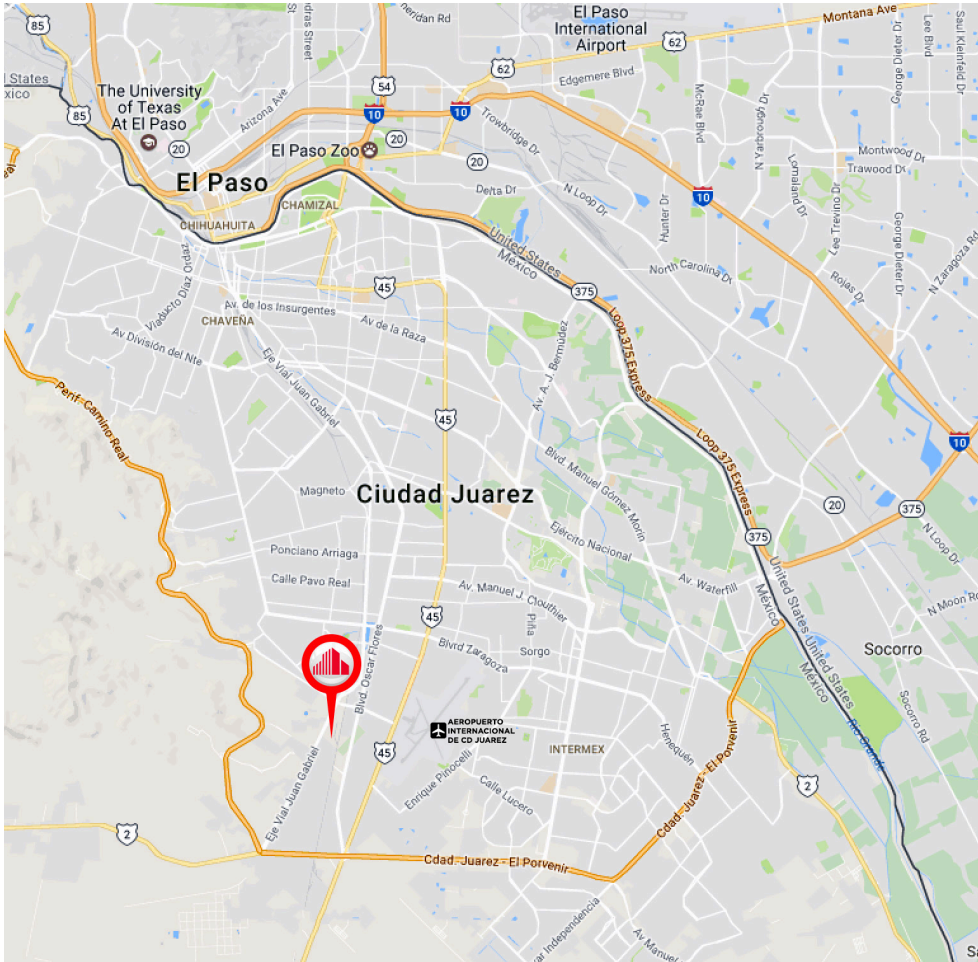




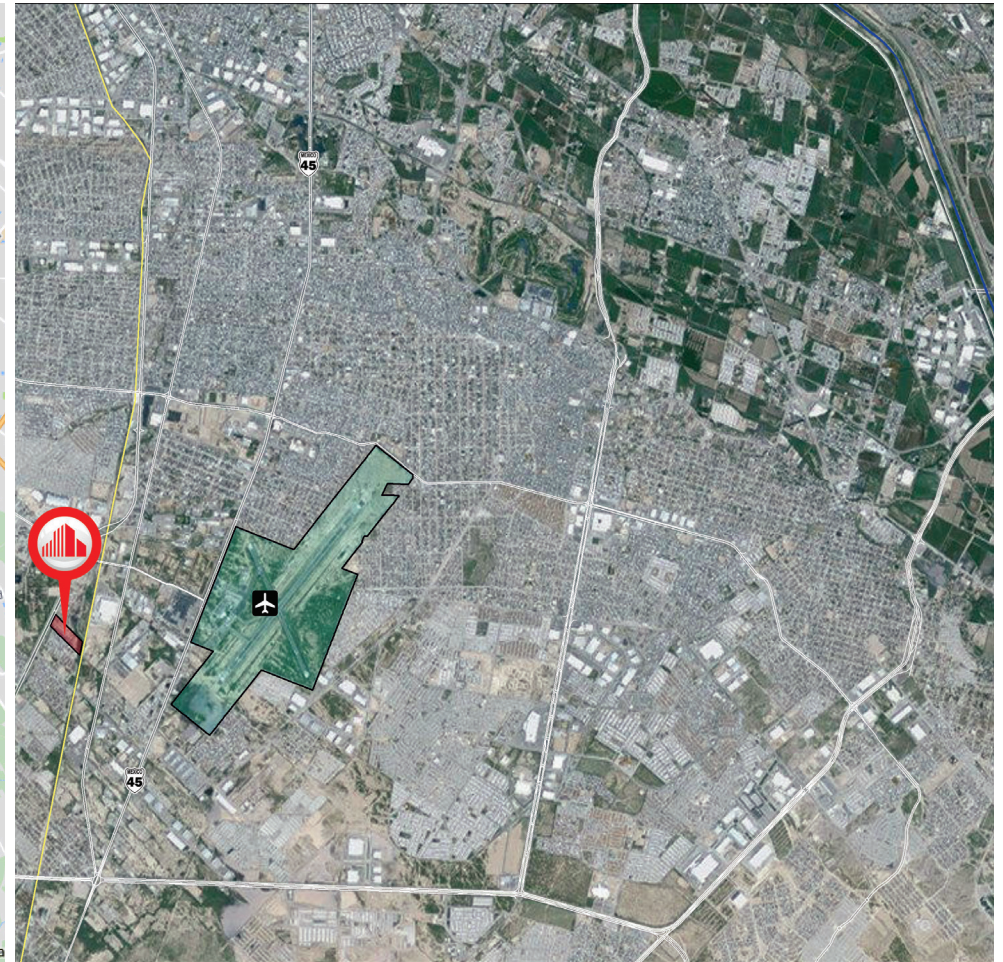
LAND FOR SALE

# CORMEX INDUSTRIAL LAND

CD. Juárez, Chihuahua, México



MAP



AERIAL

### Marush Sepulveda

Broker

+52 (656) 648 6842 ext. 43

msepulveda@piresintl.com

5-B Butterfield Trail Boulevard

El Paso, Texas 79906-4920

Main (915) 843 8888

[www.piresintl.com](http://www.piresintl.com)

*Independently Owned and Operated / A Member of the Cushman & Wakefield Alliance*

Cushman & Wakefield Copyright 2015. No warranty or representation, express or implied, is made to the accuracy or completeness of the information contained herein, and same is submitted subject to errors, omissions, change of price, rental or other conditions, withdrawal without notice, and to any special listing conditions imposed by the property owner(s). As applicable, we make no representation as to the condition of the property (or properties) in question.