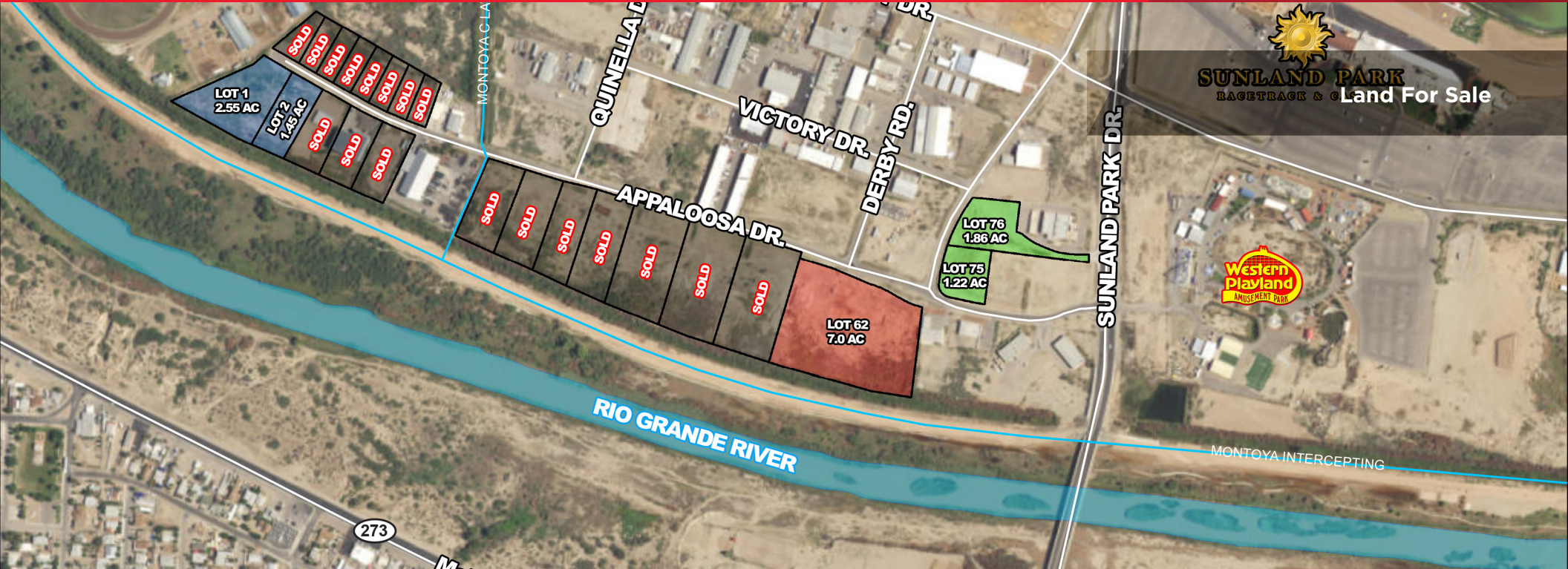







FOR SALE

SUNLAND PARK INDUSTRIAL

City of Sunland Park, New Mexico



Property Highlights

-  \$2.50/SF (Ranging from 1.45 - 2.55 acres)
-  \$3.00/SF (7.00 acres)
-  \$7.00/SF (Ranging from 1.22 - 1.86 acres)
- Municipal utilities
- Established industrial park
- Low New Mexico real estate taxes
- Close proximity to Interstate 10
- Close proximity to two International Ports of Entry to Mexico
- Paved streets
- Only 5 parcels Left

Brett Preston SIOR, CCIM
 Managing Partner
 (915) 843 8888 ext. 801
 bpreston@piresintl.com

5-B Butterfield Trail Boulevard
 El Paso, Texas 79906-4920
 Main (915) 843 8888
www.piresintl.com

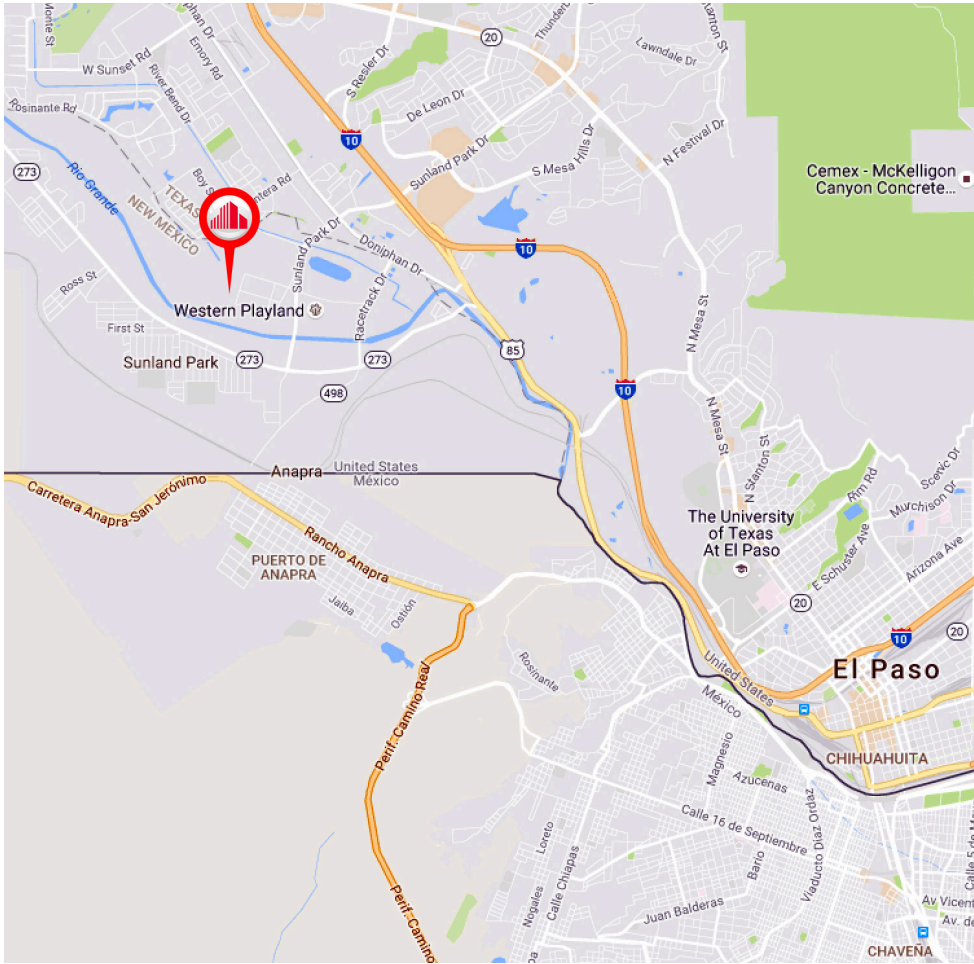
Independently Owned and Operated / A Member of the Cushman & Wakefield Alliance
 Cushman & Wakefield Copyright 2015. No warranty or representation, express or implied, is made to the accuracy or completeness of the information contained herein, and same is submitted subject to errors, omissions, change of price, rental or other conditions, withdrawal without notice, and to any special listing conditions imposed by the property owner(s). As applicable, we make no representation as to the condition of the property (or properties) in question.



FOR SALE

SUNLAND PARK INDUSTRIAL

City of Sunland Park, New Mexico



MAP



AERIAL

Brett Preston SIOR, CCIM
Managing Partner
(915) 843 8888 ext. 801
bpreston@piresintl.com

5-B Butterfield Trail Boulevard
El Paso, Texas 79906-4920
Main (915) 843 8888
www.piresintl.com

Independently Owned and Operated / A Member of the Cushman & Wakefield Alliance

Cushman & Wakefield Copyright 2015. No warranty or representation, express or implied, is made to the accuracy or completeness of the information contained herein, and same is submitted subject to errors, omissions, change of price, rental or other conditions, withdrawal without notice, and to any special listing conditions imposed by the property owner(s). As applicable, we make no representation as to the condition of the property (or properties) in question.