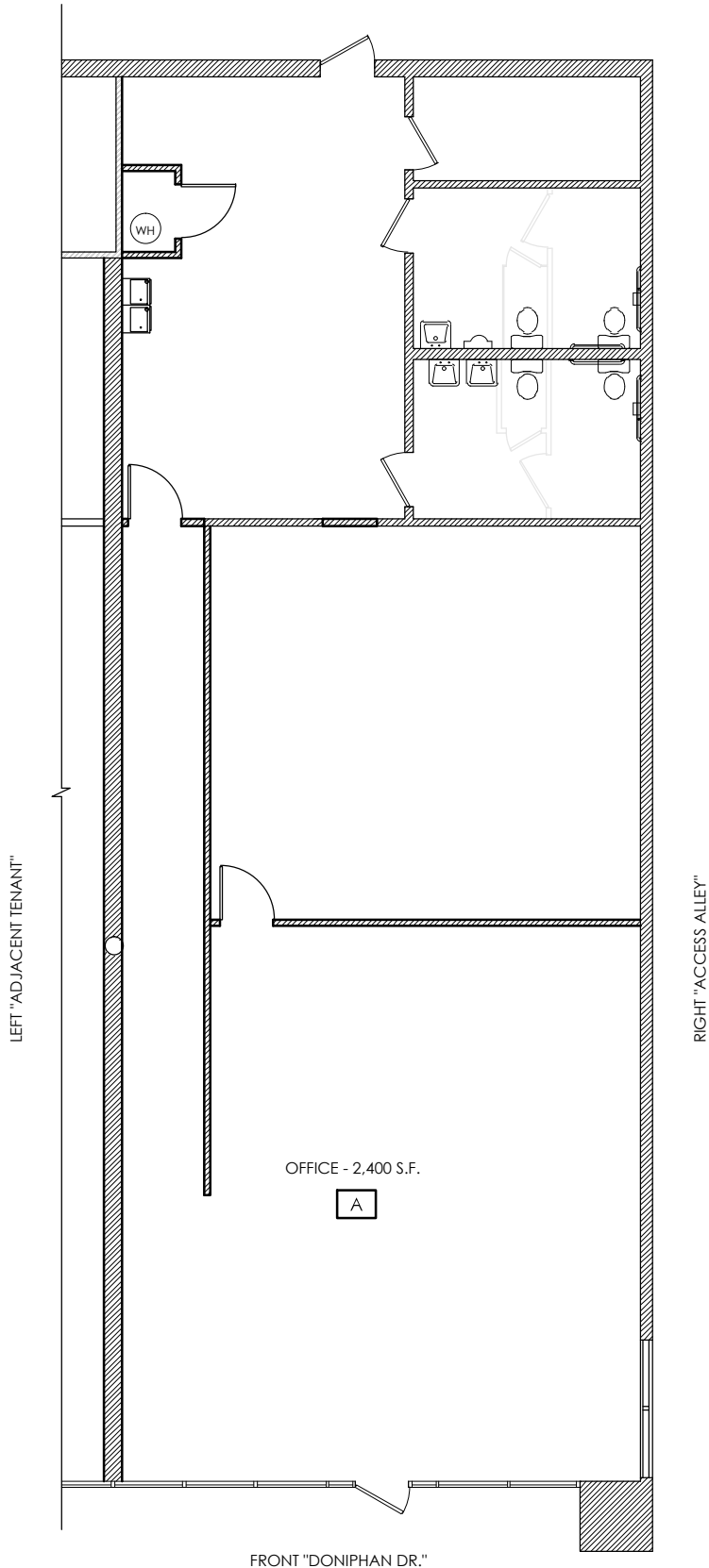


REAR "PARKING"



OFFICE - 2,400 S.F.

A

FRONT "DONIPHAN DR."



FLOOR PLAN: 2,400 S.F. TOTAL



SITE INFORMATION:

FOR LEASE > OFFICE SPACE
 5070 Doniphan Dr., Suite A, El Paso, TX 79932

DWG. TITLE:

FLOOR PLAN

REF. #:

72389