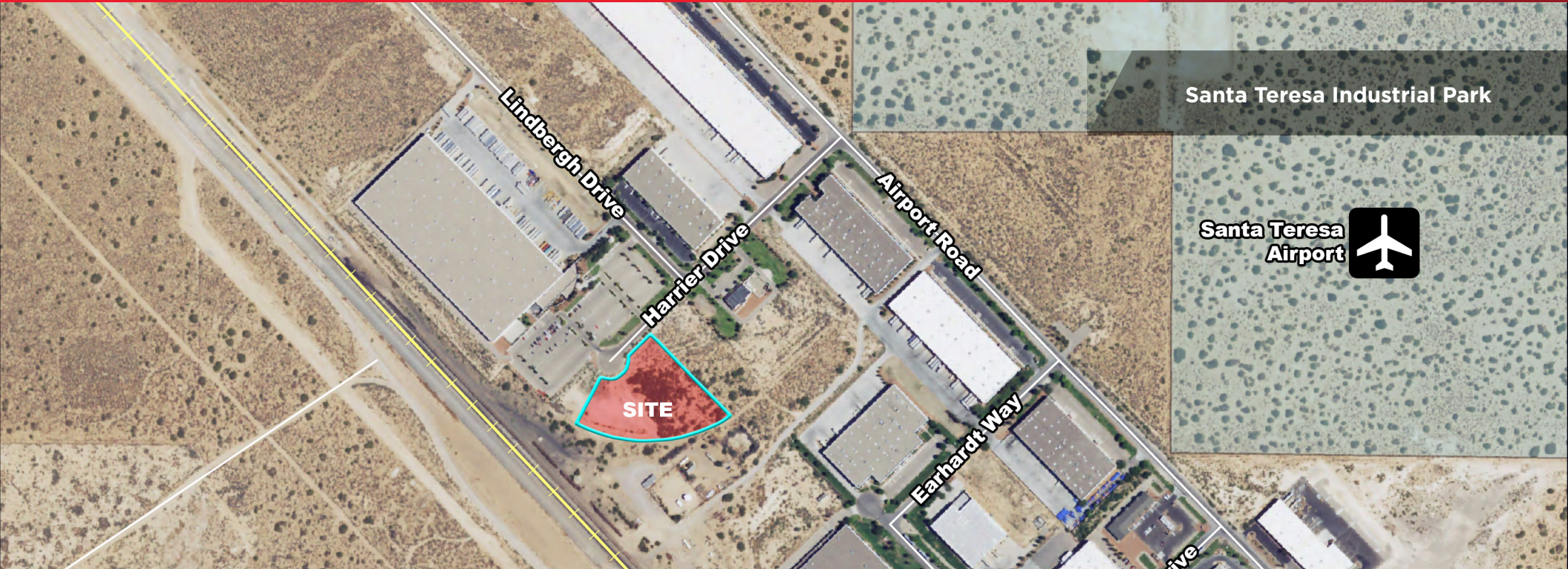




FOR SALE

SEQ HARRIER DRIVE / LINDBERGH DRIVE

Santa Teresa, New Mexico



Property Highlights

- Land size: ±3.53 acres
- Zoning: PUD-2
- Sale price: \$400,000
- Located in Santa Teresa Business Center
- Low New Mexico real estate taxes
- ±7.5 miles to Interstate 10
- ±6 miles to the Santa Teresa Port of Entry and San Jeronimo, Mexico
- Close proximity to Union Pacific Intermodal Station and Santa Teresa Airport
- Latitude: 31°51'56.07"N
- Longitude: 106°41'59.23"W
- Legal Description: Santa Teresa Business Center, Phase 3, Summary Replat of Lot 10, Lot 10B, Santa Teresa, Dona Ana County, New Mexico

Brett Preston SIOR, CCIM
 Managing Partner
 (915) 843 8888 ext. 801
 bpreston@piresintl.com

5-B Butterfield Trail Boulevard
 El Paso, Texas 79906-4920
 Main (915) 843 8888
www.piresintl.com

Independently Owned and Operated / A Member of the Cushman & Wakefield Alliance

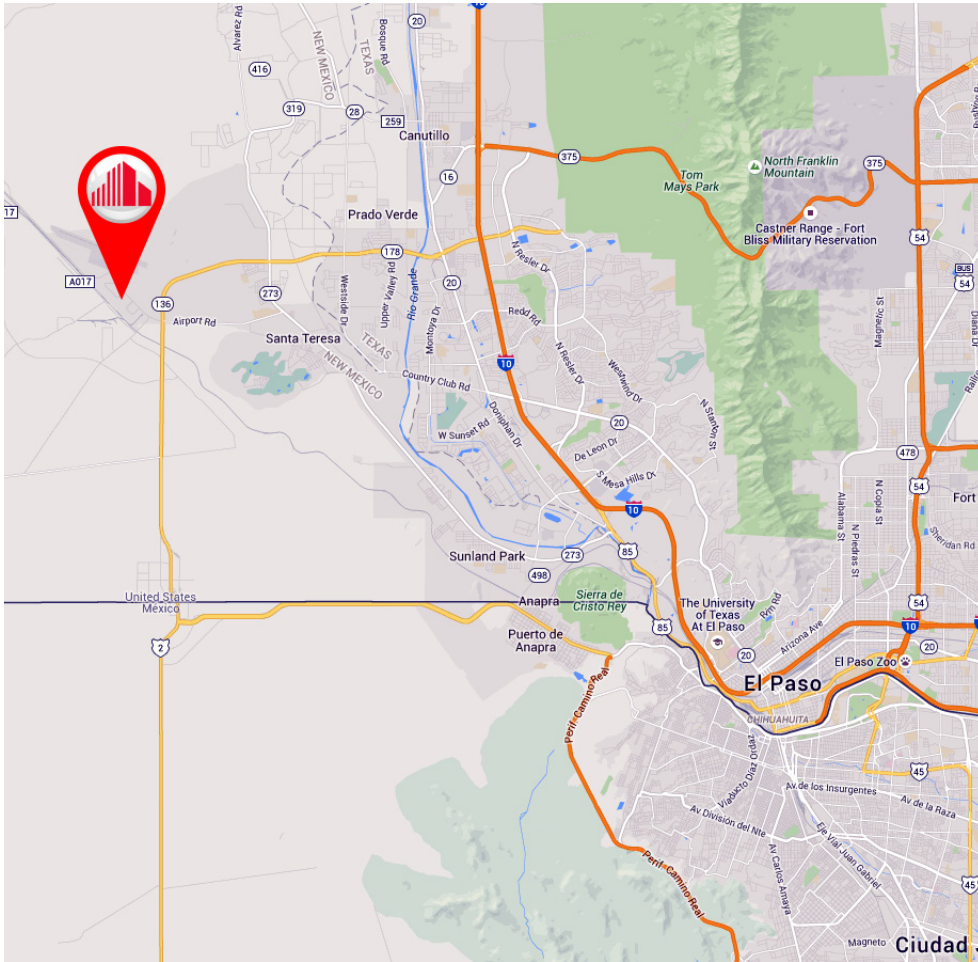
Cushman & Wakefield Copyright 2015. No warranty or representation, express or implied, is made to the accuracy or completeness of the information contained herein, and same is submitted subject to errors, omissions, change of price, rental or other conditions, withdrawal without notice, and to any special listing conditions imposed by the property owner(s). As applicable, we make no representation as to the condition of the property (or properties) in question.



FOR SALE

SEQ HARRIER DRIVE / LINDBERGH DRIVE

Santa Teresa, New Mexico



MAP



AERIAL

Brett Preston SIOR, CCIM
Managing Partner
(915) 843 8888 ext. 801
bpreston@piresintl.com

5-B Butterfield Trail Boulevard
El Paso, Texas 79906-4920
Main (915) 843 8888
www.piresintl.com

Independently Owned and Operated / A Member of the Cushman & Wakefield Alliance

Cushman & Wakefield Copyright 2015. No warranty or representation, express or implied, is made to the accuracy or completeness of the information contained herein, and same is submitted subject to errors, omissions, change of price, rental or other conditions, withdrawal without notice, and to any special listing conditions imposed by the property owner(s). As applicable, we make no representation as to the condition of the property (or properties) in question.