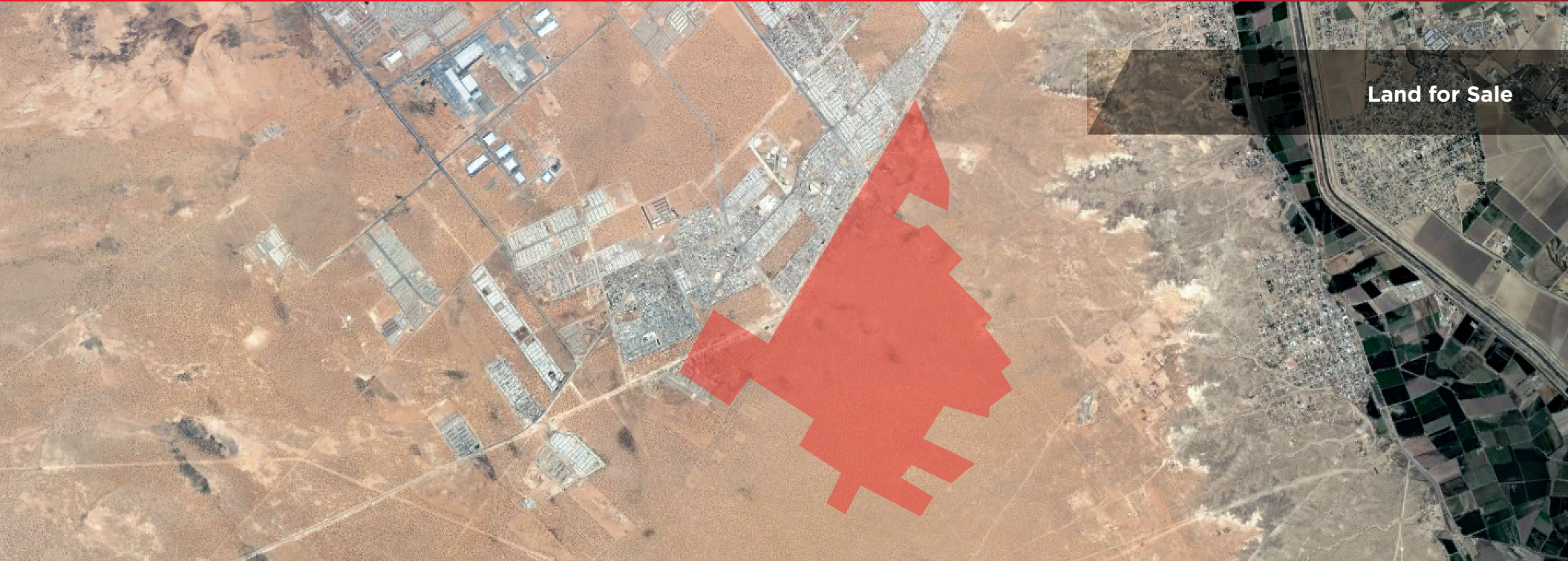




FOR SALE

TALAMAS CAMANDARI

Cd. Juárez, Chihuahua, México



Land for Sale

Property Highlights

- Land area: 500 HAs
- Parcel can be subdivided.
- Minimum area for sale is 10 HAs
- Located at southeast Juárez, the area of major growth of industrial, commercial, and housing development
- Conducive to different uses including residential, commercial and industrial.
- Access to the property through Talamas Camandari Avenue, main highway in the southeast part of Juárez, through Calle mardel Plata and through Blvd. Miguel de la Madrid.
- Approximate 30 minutes to Zaragoza International Port of Entry

Marush Sepulveda

Broker

+52 (656) 648 6842 y43

msepulveda@piresintl.com

Erick Simons

Broker

+52 (656) 648 6842 y43

esimons@piresintl.com

Blvd. Tomás Fernández 7930-307

Edificio Campestre B

Cd. Juárez, Chihuahua, México 32460

Main +(01152) (656) 625 1000

www.piresintl.com

Independently Owned and Operated / A Member of the Cushman & Wakefield Alliance

Cushman & Wakefield Copyright 2017. No warranty or representation, express or implied, is made to the accuracy or completeness of the information contained herein, and same is submitted subject to errors, omissions, change of price, rental or other conditions, withdrawal without notice, and to any special listing conditions imposed by the property owner(s). As applicable, we make no representation as to the condition of the property (or properties) in question.



FOR SALE

TALAMAS CAMANDARI

Cd. Juárez, Chihuahua, México



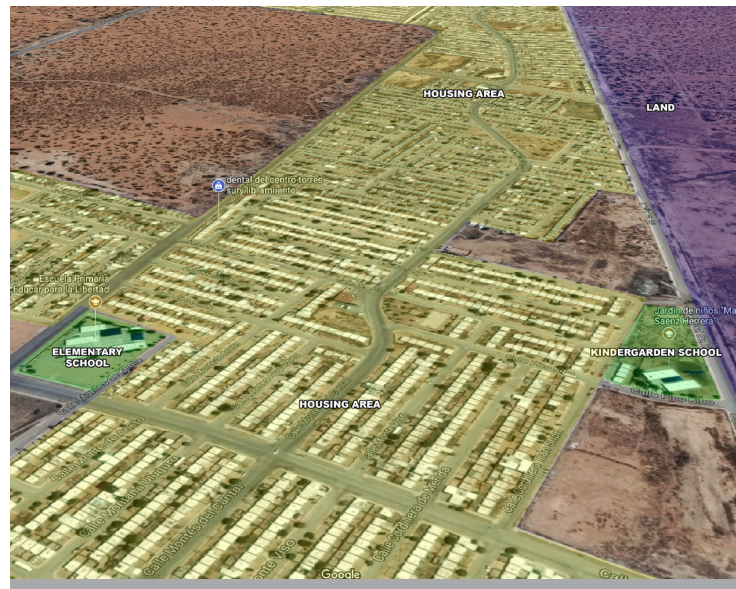
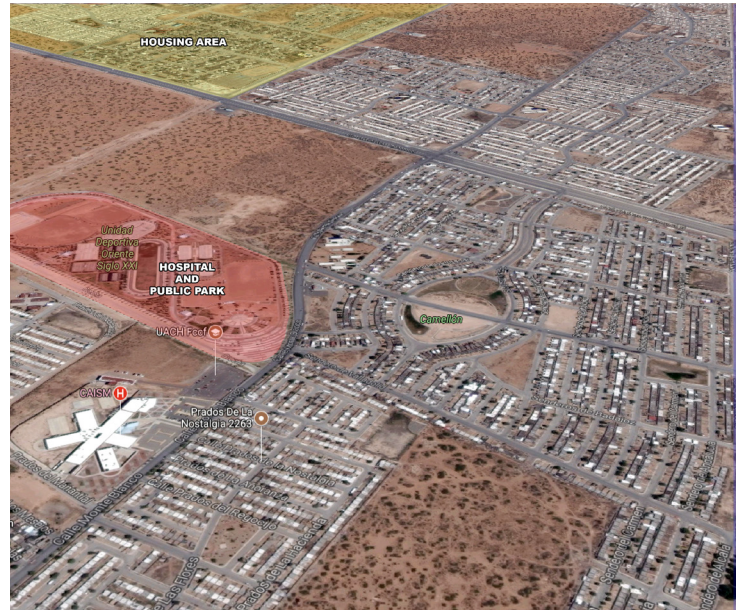
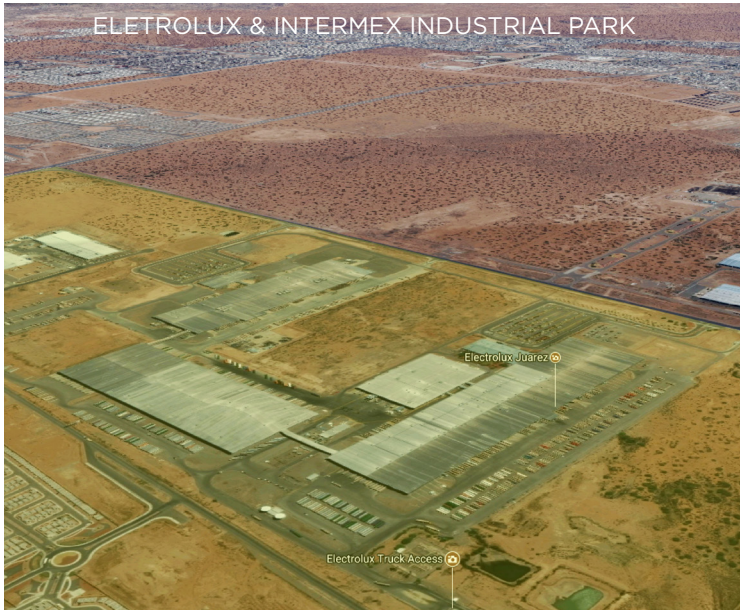
Public services in the area

- Public sports park "Oriente Siglo XXI"
- Hospital "Caism & Cessa"
- 4 elementary schools
- 2 kindergarden schools
- 2 middle schools
- 1 technical school



Independently Owned and Operated / A Member of the Cushman & Wakefield Alliance

Cushman & Wakefield Copyright 2017. No warranty or representation, express or implied, is made to the accuracy or completeness of the information contained herein, and same is submitted subject to errors, omissions, change of price, rental or other conditions, withdrawal without notice, and to any special listing conditions imposed by the property owner(s). As applicable, we make no representation as to the condition of the property (or properties) in question.



Offering Highlights

- 500 Hectares for high density residential (up to 60 houses per hectare)
- Divisible into 10 HA parcels
- A change to Industrial or Commercial zoning is feasible
- Close to Intermex Sur Industrial Park and Electrolux Campus where companies like Jones Plastics, BMP, Custom Profile and Longda are established.
- Flextronics and Lexmark are at less than 10 min driving distance
- Abundant pool of direct labor around
- Public services at close distances include: Kindergarten, elementary, middle schools, hospitals and public parks
- Water, sewer, electricity available to the line of the property

Independently Owned and Operated / A Member of the Cushman & Wakefield Alliance

Cushman & Wakefield Copyright 2017. No warranty or representation, express or implied, is made to the accuracy or completeness of the information contained herein, and same is submitted subject to errors, omissions, change of price, rental or other conditions, withdrawal without notice, and to any special listing conditions imposed by the property owner(s). As applicable, we make no representation as to the condition of the property (or properties) in question.



FOR SALE

TALAMAS CAMANDARI

Cd. Juárez, Chihuahua, México

PROPERTY SUMMARY

Address	Ave. Talamas Camandari
Square Lots	10 HAs
Land Area	500 HAs
Zoning	High Density Residential



Independently Owned and Operated / A Member of the Cushman & Wakefield Alliance

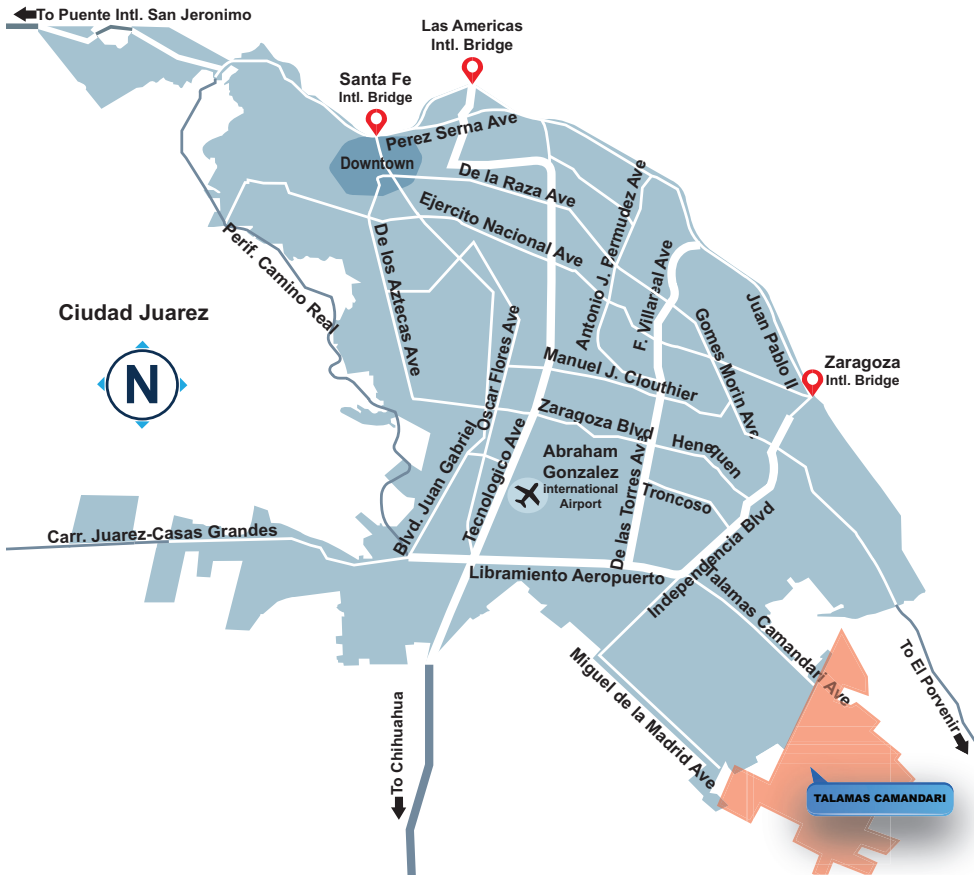
Cushman & Wakefield Copyright 2017. No warranty or representation, express or implied, is made to the accuracy or completeness of the information contained herein, and same is submitted subject to errors, omissions, change of price, rental or other conditions, withdrawal without notice, and to any special listing conditions imposed by the property owner(s). As applicable, we make no representation as to the condition of the property (or properties) in question.



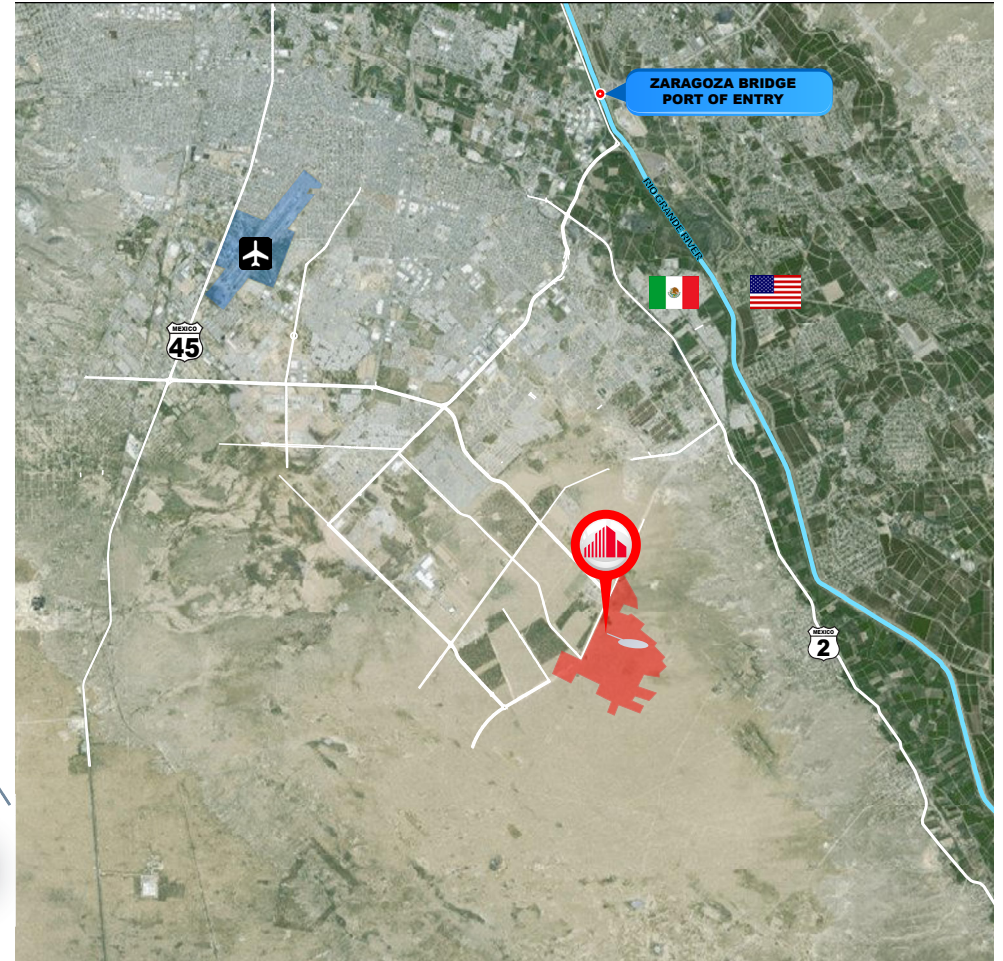
FOR SALE

TALAMAS CAMANDARI

Cd. Juárez, Chihuahua, México



MAP



AERIAL

Marush Sepulveda
Broker
+52 (656) 648 6842 y43
msepulveda@piresintl.com

Erick Simons
Broker
+52 (656) 648 6842 y43
esimons@piresintl.com

Blvd. Tomás Fernández 7930-307
Edificio Campestre B
Cd. Juárez, Chihuahua, México 32460
Main +(01152) (656) 625 1000
www.piresintl.com

Independently Owned and Operated / A Member of the Cushman & Wakefield Alliance
Cushman & Wakefield Copyright 2017. No warranty or representation, express or implied, is made to the accuracy or completeness of the information contained herein, and same is submitted subject to errors, omissions, change of price, rental or other conditions, withdrawal without notice, and to any special listing conditions imposed by the property owner(s). As applicable, we make no representation as to the condition of the property (or properties) in question.