



**Property Highlights**

- Commercial land area: 50,235 m2 (540,528.60 SF)  
\$100 USD/m2
- Industrial land area: 25,919 m2 (278,888 SF)  
32,169.50 m2 (346,727.49 SF)  
\$38 USD/m2
- Utilities at property line
- Multi-facility potential
- Conductive to different uses including commercial and manufacturing.
- Adjacent to Teofilo Borunda and Gomez Morin Highway access.
- Located at east Juarez area contiguous labor pool.
- Approximate 5 minutes to Zaragoza International Port of Entry.
- Approximate 20 minutes to Cordoba International Port of Entry.

**Marush Sepulveda**  
Broker  
+52 (656) 648 6842 y43  
msepulveda@piresintl.com

**Erick Simons**  
Broker  
+52 (656) 648 6842 y43  
esimons@piresintl.com

Blvd. Tomás Fernández 7930-307  
Edificio Campestre B  
Cd. Juárez, Chihuahua, México 32460  
Main +(01152) (656) 625 1000  
[www.piresintl.com](http://www.piresintl.com)



FOR SALE

# GOMEZ MORIN

Cd. Juárez, Chihuahua, México

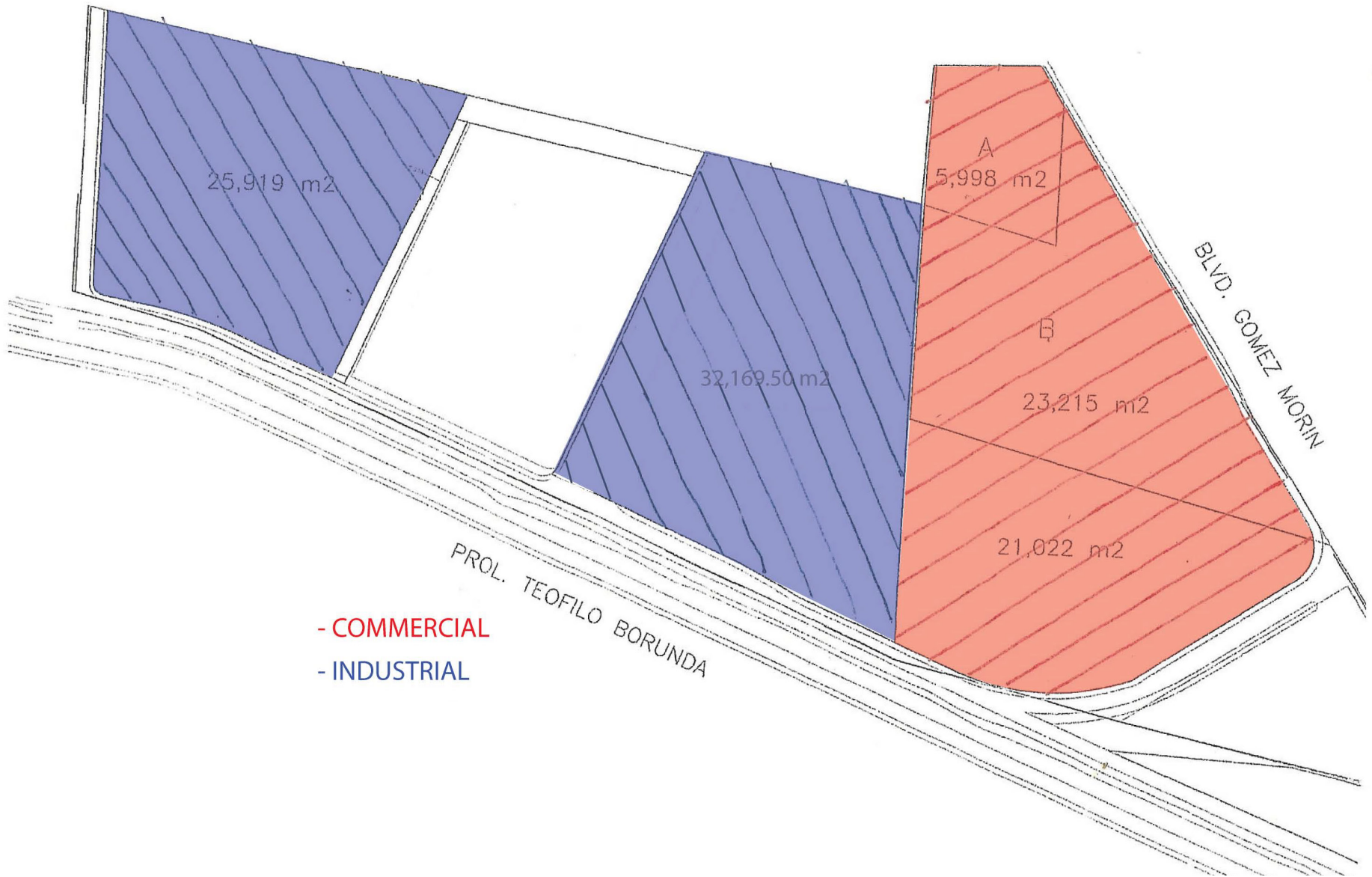
## Aerials



*Independently Owned and Operated / A Member of the Cushman & Wakefield Alliance*

Cushman & Wakefield Copyright 2017. No warranty or representation, express or implied, is made to the accuracy or completeness of the information contained herein, and same is submitted subject to errors, omissions, change of price, rental or other conditions, withdrawal without notice, and to any special listing conditions imposed by the property owner(s). As applicable, we make no representation as to the condition of the property (or properties) in question.

Site Plan



- COMMERCIAL

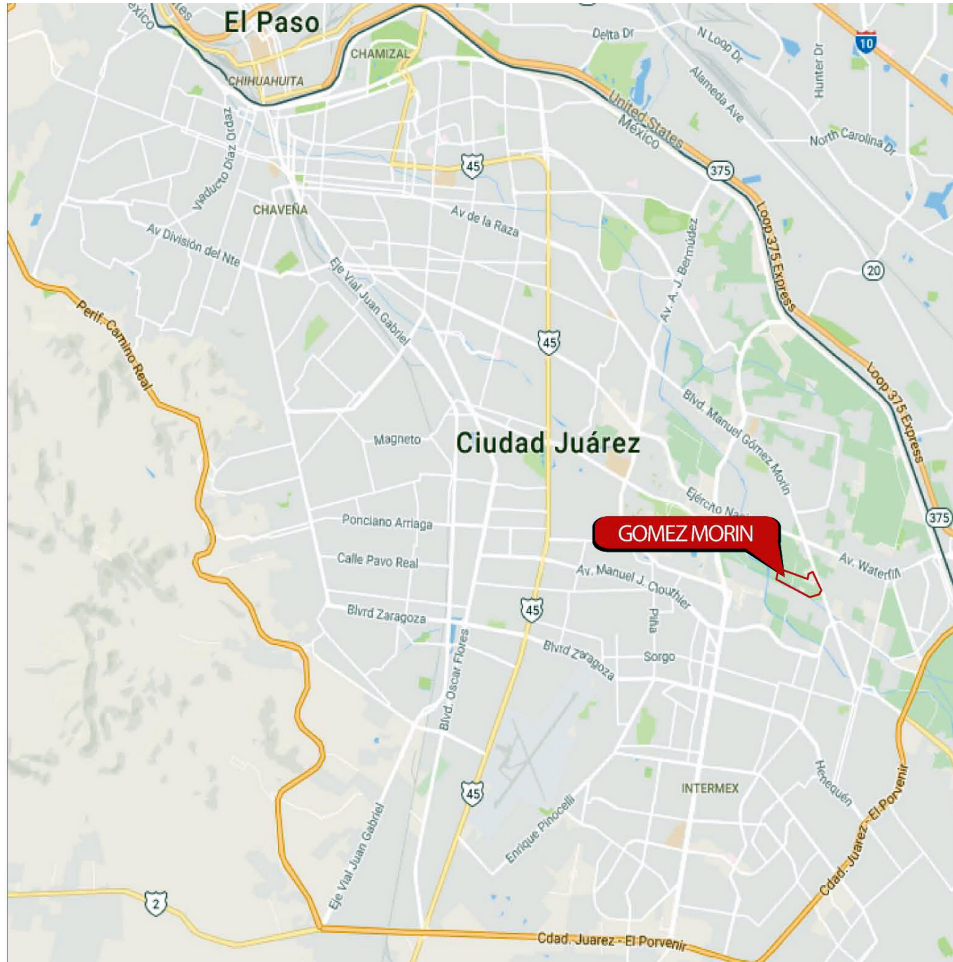
- INDUSTRIAL



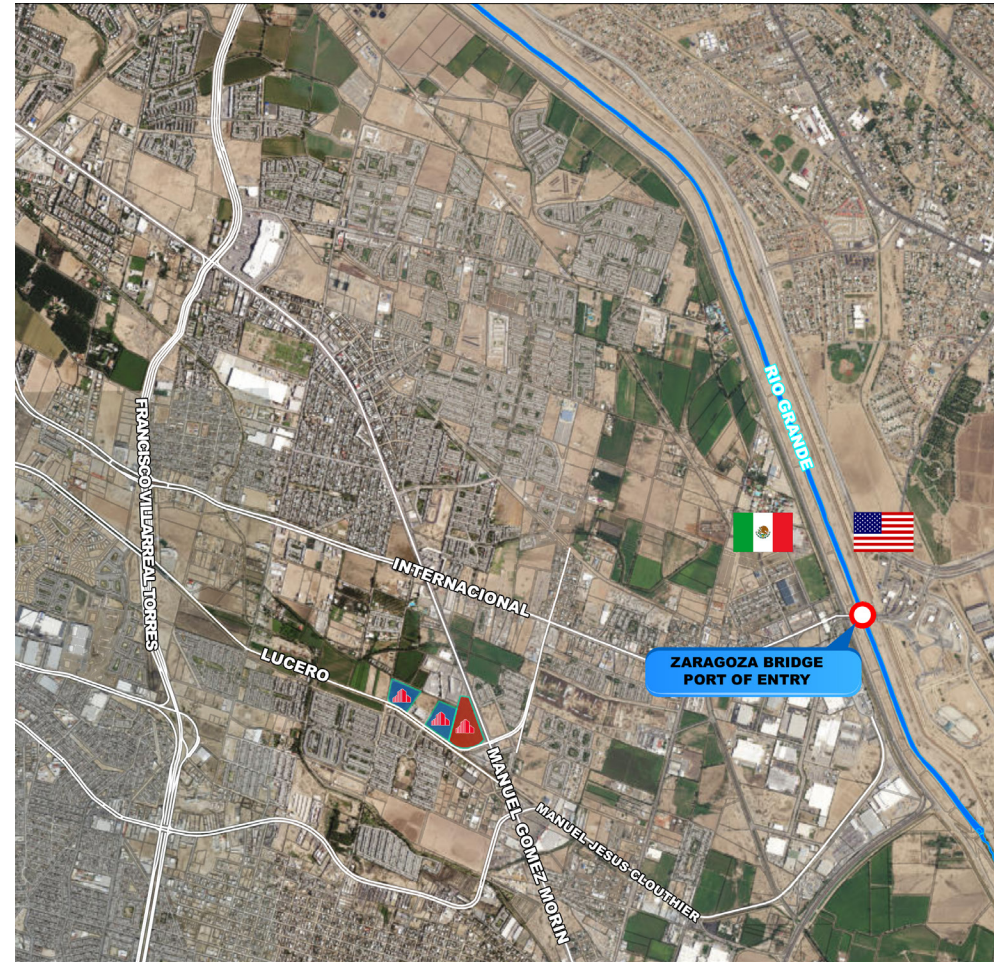
FOR SALE

# GOMEZ MORIN

Cd. Juárez, Chihuahua, México



MAP



AERIAL

**Marush Sepulveda**  
Broker  
+52 (656) 648 6842 y43  
msepulveda@piresintl.com

**Erick Simons**  
Broker  
+52 (656) 648 6842 y43  
esimons@piresintl.com

Bldv. Tomás Fernández 7930-307  
Edificio Campestre B  
Cd. Juárez, Chihuahua, México 32460  
Main +(01152) (656) 625 1000  
[www.piresintl.com](http://www.piresintl.com)

*Independently Owned and Operated / A Member of the Cushman & Wakefield Alliance*  
Cushman & Wakefield Copyright 2017. No warranty or representation, express or implied, is made to the accuracy or completeness of the information contained herein, and same is submitted subject to errors, omissions, change of price, rental or other conditions, withdrawal without notice, and to any special listing conditions imposed by the property owner(s). As applicable, we make no representation as to the condition of the property (or properties) in question.