



LAND FOR SALE

9750 E. BATAAN MEMORIAL HIGHWAY

Las Cruces, New Mexico

Land For Sale



### Property Highlights

- Lot size: 16.62 Acres
- Zoning: D1 (low density residential)
- Highway 70 frontage
- ±15 miles to greater Las Cruces area
- ±16 miles to White Sands Missile Range
- ±5.6 miles to Sunrise Elementary School
- ±8.6 miles to Organ Mountain High School
- Lot dimensions: ±3,509.93' X 223.29'
- Sale Price \$332,000

#### Eric Schalk

New Mexico Broker  
(915) 843 8888 ext. 809  
eschalk@piresintl.com

#### Brett C. Preston, SIOR, CCIM

Managing Partner  
(915) 843 8888 ext. 801  
bpreston@piresintl.com

5-B Butterfield Trail Boulevard  
El Paso, Texas 79906-4920  
Main (915) 843 8888  
[www.piresintl.com](http://www.piresintl.com)

*Independently Owned and Operated / A Member of the Cushman & Wakefield Alliance*

Cushman & Wakefield Copyright 2021. No warranty or representation, express or implied, is made to the accuracy or completeness of the information contained herein, and same is submitted subject to errors, omissions, change of price, rental or other conditions, withdrawal without notice, and to any special listing conditions imposed by the property owner(s). As applicable, we make no representation as to the condition of the property (or properties) in question.



LAND FOR SALE

9750 E. BATAAN MEMORIAL HIGHWAY

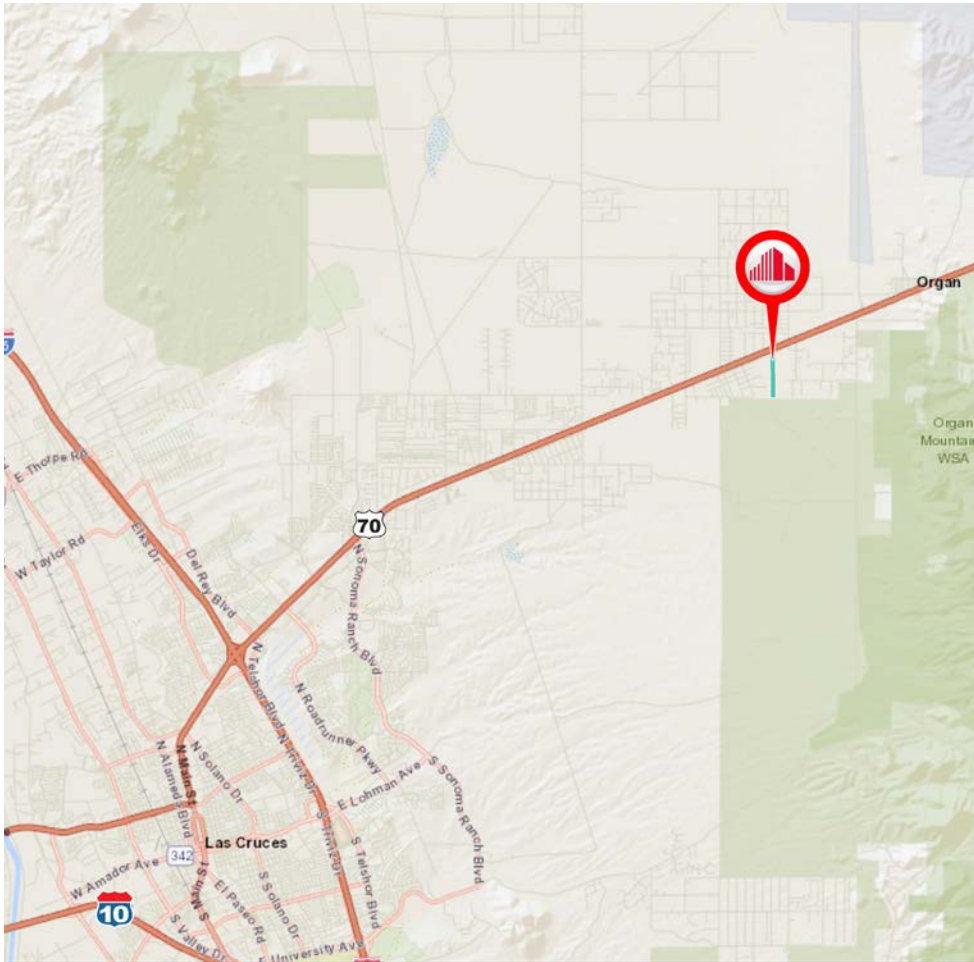
Las Cruces, New Mexico

Photos

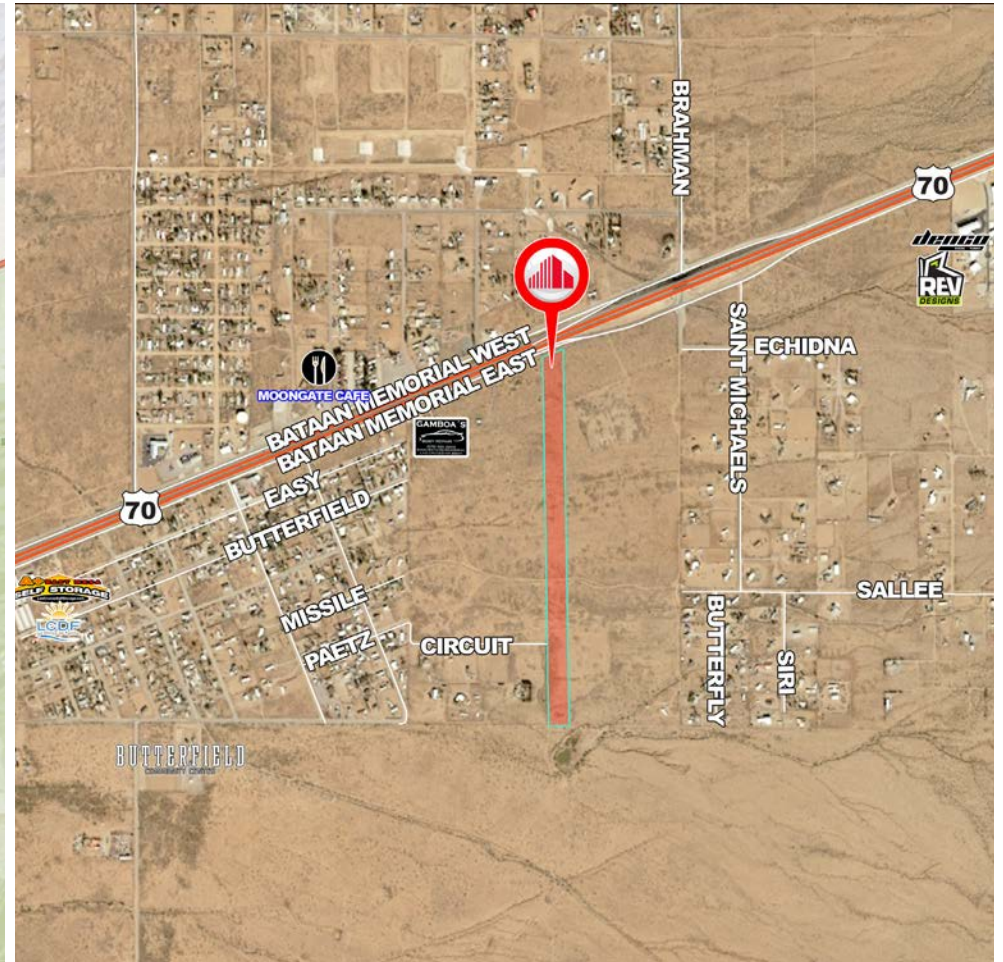


*Independently Owned and Operated / A Member of the Cushman & Wakefield Alliance*

Cushman & Wakefield Copyright 2021. No warranty or representation, express or implied, is made to the accuracy or completeness of the information contained herein, and same is submitted subject to errors, omissions, change of price, rental or other conditions, withdrawal without notice, and to any special listing conditions imposed by the property owner(s). As applicable, we make no representation as to the condition of the property (or properties) in question.



MAP



AERIAL

**Eric Schalk**  
 New Mexico Broker  
 (915) 843 8888 ext. 809  
 eschalk@piresintl.com

**Brett C. Preston, SIOR, CCIM**  
 Managing Partner  
 (915) 843 8888 ext. 801  
 bpreston@piresintl.com

5-B Butterfield Trail Boulevard  
 El Paso, Texas 79906-4920  
 Main (915) 843 8888  
**www.piresintl.com**